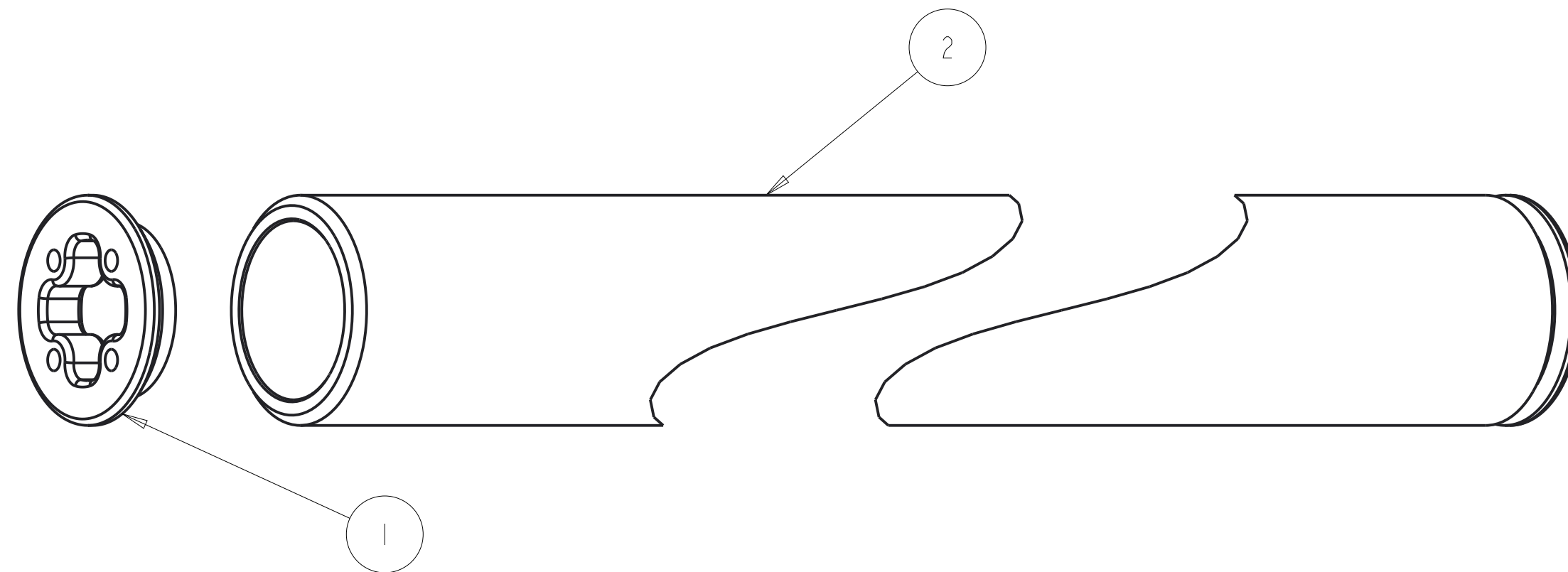
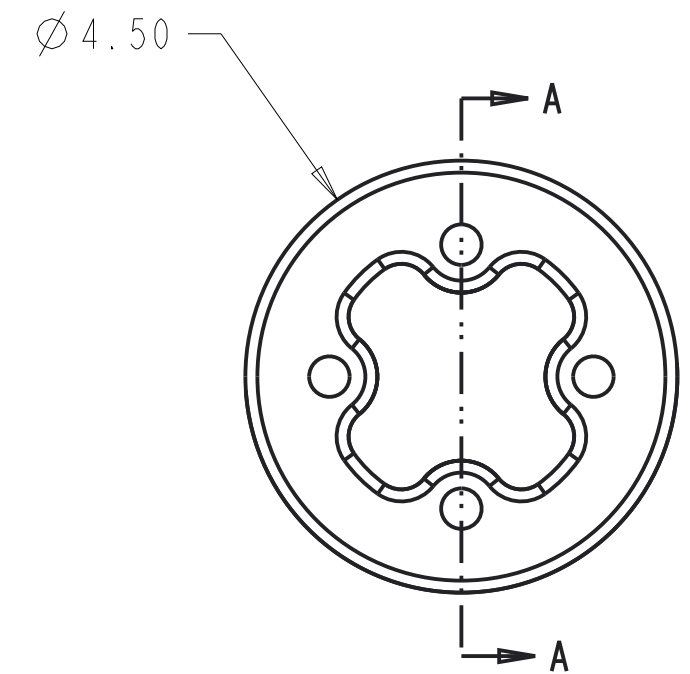
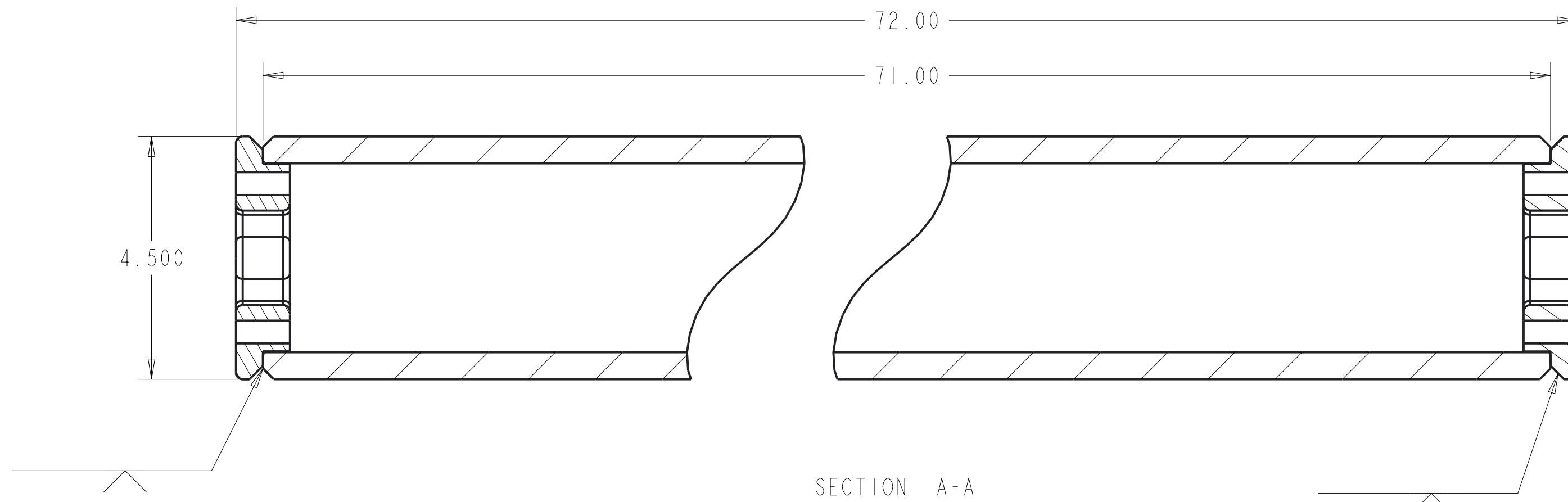


NOTES: UNLESS OTHERWISE SPECIFIED.

1. FOR DIMENSIONS NOT SHOWN SEE COMPUTER GENERATED FILE: 500-9420-03 REV: 4
2. PLATING: ALODINE
3. PAINT: SEMI GLOSS BLACK BK-08
4. ONE HALF OF A FEATURE DIMENSIONED ACROSS A CENTER LINE AND/OR A SYMMETRIC CALLOUT IS EQUAL TO THE DIMENSION SHOWN DIVIDED BY TWO AND ITS TOLERANCE DIVIDED BY TWO.
5. BREAK AND DEBURR ALL SHARP EDGES.
6. PART TO BE FREE FROM DIRT AND OILS.

REVISIONS				
ZONE	REV	DESCRIPTION	DATE	APPROVED
--	1	INITIAL RELEASE	02012-APR-26	--
	2	LENGTH, ENDS, PAINT	02012-APR-26	
--	3	"POLE", BOM	02012-MAY-21	
	4	COLOR SHEET	02012-NOV-15	



ITEM NO.	QTY RECD.	PART NO.	DRAWING TITLE OR DESCRIPTION	MANUFACTURER	MFG PART NO.
2	1	500-1421-03	USM, Z-POLE 72"	FAB	---
1	2	500-1420	USM, Z-POLE END	FAB	---

UNLESS OTHERWISE SPECIFIED DIMENSIONS ARE IN INCHES.		DESIGNER	
TOLERANCES ARE:		REASON BRADLEY	
.X +/- 0.1	PRO/E MATERIAL	ENGINEER	GS
.XX +/- 0.01	PRO/E MASS	DRAFTER	---
.XXX +/- 0.001	PRO/E VOLUME	CHECKED	---
ANGLES +/- 0.5	PRO/E DRAWING FILE NAME:	DO NOT SCALE DRAWING	
INTERPRET DIMENSIONS PER ASME Y14.5M 1994 (R2004)	500-9420-03		

UNIVERSAL SONAR MOUNT		
USM, Z-POLE ASSY, 72"		
SIZE	CUSTOMER DRAWING/PART NO.	REV
C	---	4
DRAWING/PART NO.		
500-9420-03		
SCALE	SHEET 1 OF 2	
0.500		

CUSTOMER DRAWING/PART NO. 500-9420-03 DRAWING/PART NO. 500-9420-03 REV 4 SH 1

4

3

2

1

REVISIONS
SEE SHEET 1

D

CUSTOMER DRAWING/PART NO. ---

DRAWING/PART NO.

500-9420-03

REV

4

SHT

2

A



UNIVERSAL SONAR MOUNT

USM, Z-POLE ASSY, 72"

SIZE	CUSTOMER DRAWING/PART NO.	REV
C	---	4
	DRAWING/PART NO. 500-9420-03	

SCALE 0.200 SHEET 2 OF 2

4

3

2

1

A